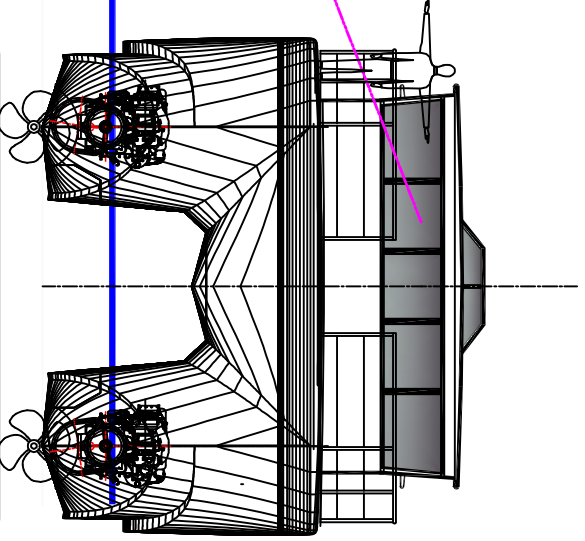
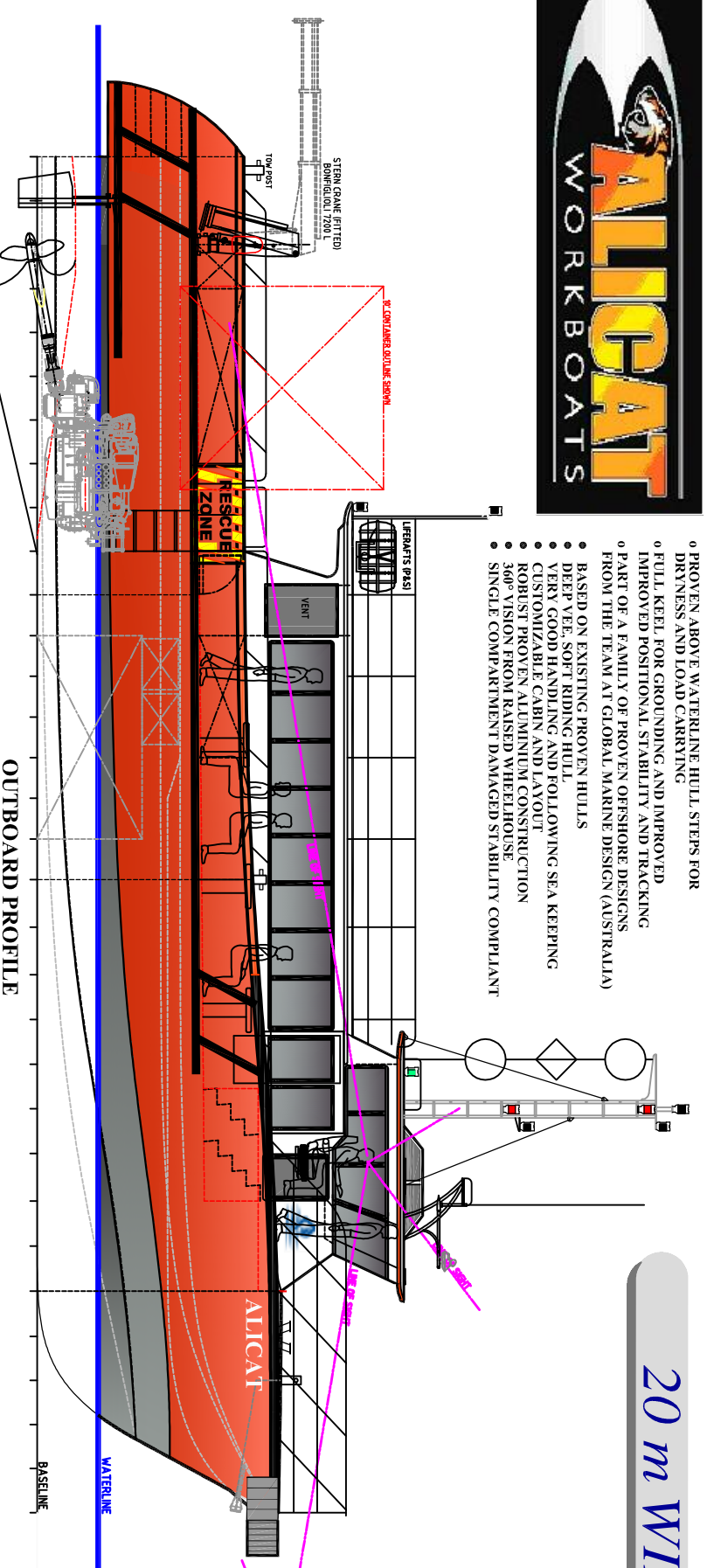


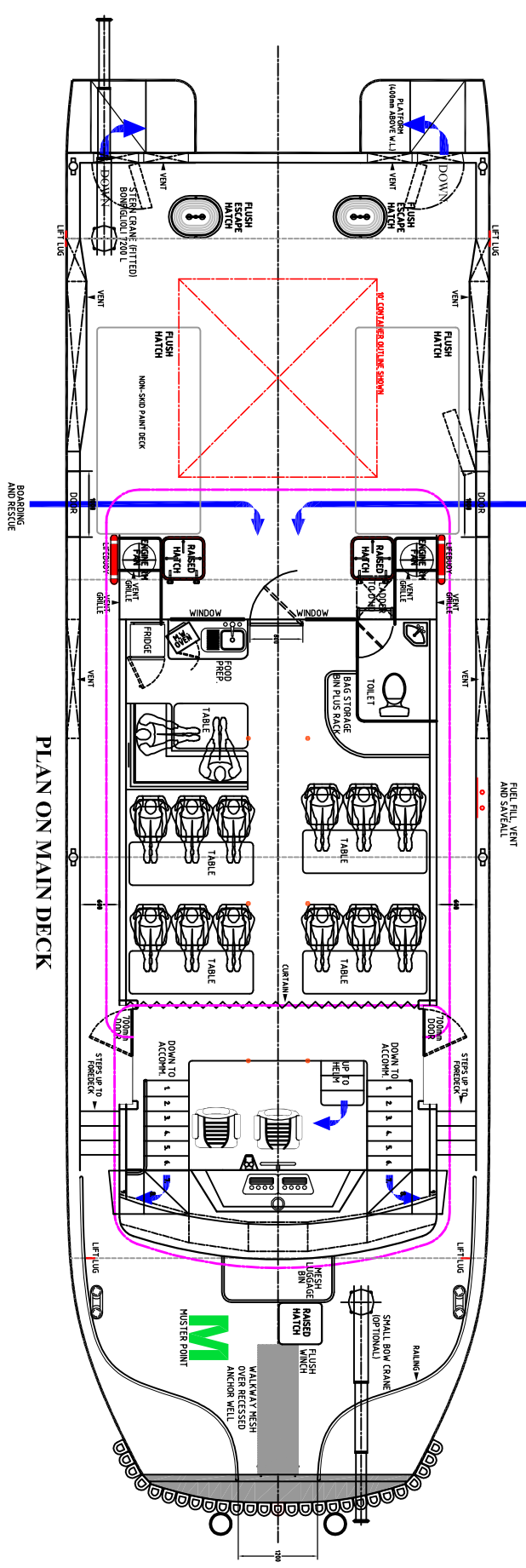


- PROVEN ABOVE WATERLINE HULL STEPS FOR DRYNESS AND LOAD CARRYING
- FULL KEEL FOR GROUNDING AND IMPROVED POSITIONAL STABILITY AND TRACKING
- PART OF A FAMILY OF PROVEN OFFSHORE DESIGNS FROM THE TEAM AT GLOBAL MARINE DESIGN (AUSTRALIA)
- BASED ON EXISTING PROVEN HULLS
- DEEP VEE, SOFT RIDING HULL
- VERY GOOD HANDLING AND FOLLOWING SEA KEEPING
- CUSTOMIZABLE CABIN AND LAYOUT
- ROBUST PROVEN ALUMINIUM CONSTRUCTION
- 360° VISION FROM RAISED WHEELHOUSE
- SINGLE COMPARTMENT DAMAGED STABILITY COMPLIANT

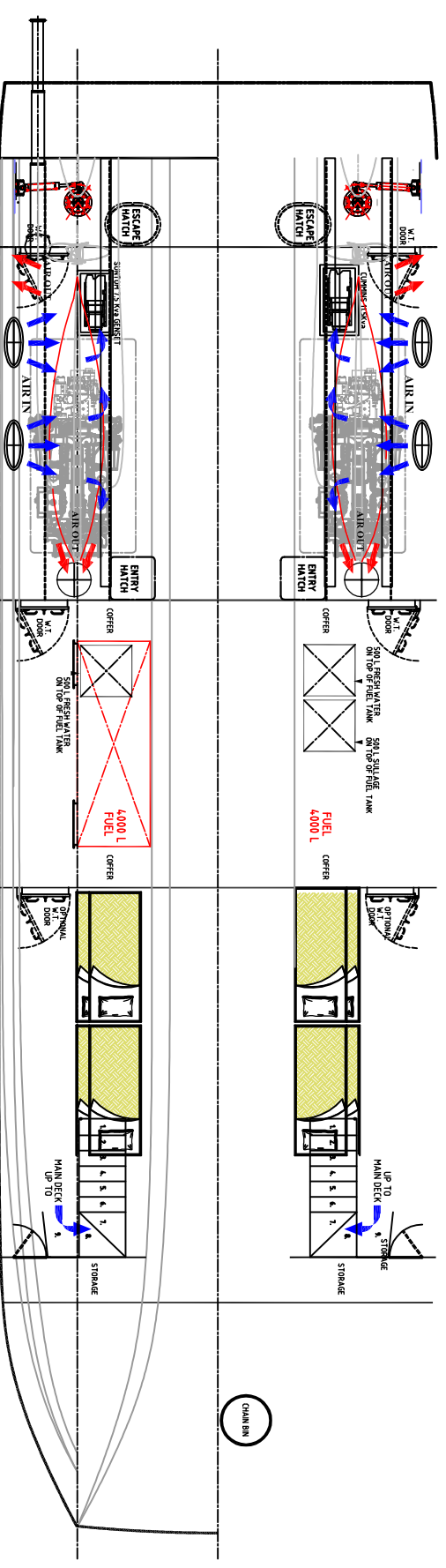
20 m WIND FARM CATAMARAN



OUTBOARD PROFILE
BHD 1 2 3 4 5 6 7 8 9 10 11 12 13 14 15 16 17 18 19 20 21 22 23 24 25 26 27 28 29 30 31
BASELINE



PLAN ON MAIN DECK



PLAN BELOW MAIN DECK

PARTICULARS

LENGTH HULL	20,000 m (65' 7")
LENGTH OVERALL	21,300 m (70' 1")
HOLLOWED BEAM	6.0 m (20')
DISPLACEMENT (SCANTLING)	53 TONNES
VESSEL SPEED (SCANTLING)	30 KNOTS @ 4.0 T, 26 @ 5.3 T
WATERLINE LENGTH (SCANTLING)	18,550 m (60' 10")
WATERLINE BEAM (SCANTLING)	5,990 m (19' 8")
HOLLOWED DRAFT (SCANTLING)	1,020 m (3' 4")
DEEPEST DRAFT	1,700 m (5' 7")
FRESH WATER TANKAGE	1,000 L
SULLAGE CAPACITY	500 L
FUEL CAPACITY	APPROX 8,500 L
PAX CAPACITY	12
ENGINES	CATERPILLAR C32 1319HP @ 1800 RPM
GEARBOXES	1000 mm
BULWARK HEIGHT	1000 mm
DNV CLASS APPROVAL	HULL AND SUPERSTRUCTURE CAT 2 (60 Nm)
MCA APPROVAL	

DNV SURVEY DATA

CLASS NOTATION

1A1 HSLC RL CREW

L - Length Between Perpendiculars 18 550 m
 B - Beam Moulded 6 000 m
 B - Moulded Breadth at Waterline 1 950 m
 D - Depth (Mid) 2 540 m
 T - Draft 1 020 m
 CB - Block Coefficient 0.45
 Hdg - Deadrise Angle at LCG 12 Degrees

DNV OPERATIONAL ENVELOPE

SPEED VERSUS WAVE HEIGHT

HIGHEST ALLOWABLE SPEED (KNOTS) SIGNIFICANT WAVE HEIGHT H/1/3 m

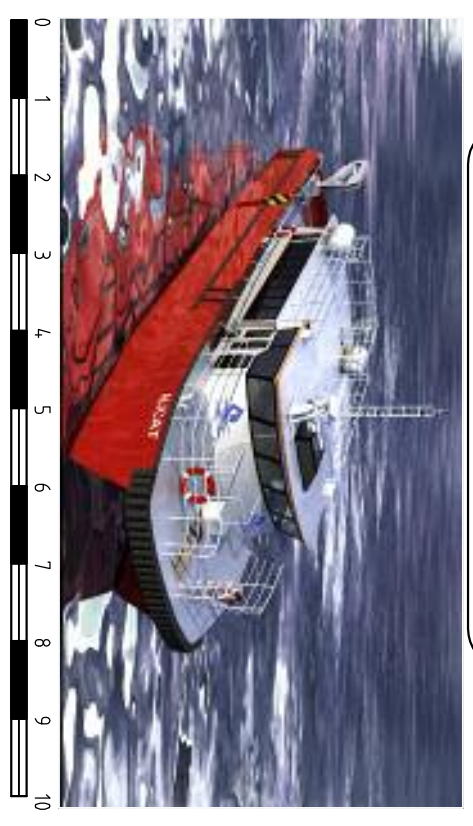
30	0.0 - 0.7
26	0.7 - 1.0
22	1.0 - 1.5
20	1.5 - 2.0
18	2.0 - 2.5
16	2.5 - 3.2
10	3.2 - 4.0



MARINE KITS MXK AUSTRALIA www.marinekits.com	DRN G.M.D. CKD APPD DATED 3.07.09	CLIENT VESSEL 20m Windfarm BUILDER DESIGN No. 09051	TITLE GENERAL ARRANGEMENT REV A1 DRG No 09051/010101 SCALE 1:50 at A1 SHEET 1 OF 1
	GLOBAL MARINE DESIGN PTY. LTD. CONTACT DETAILS Ph: 08 9 427 0200 Fax: 08 9 427 2000 Email: info@globalmarine.com.au MAILING ADDRESS UNIT 5, 43 BURLINGTON STREET SYDNEY, NSW WESTERN AUSTRALIA 6105	UNLESS OTHERWISE STATED ALL DIMENSIONS ARE IN MILLIMETRES	REV E

REV	H	V	REVISION DESCRIPTION	DATE	APPD

DO NOT SCALE



METRES

