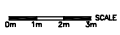
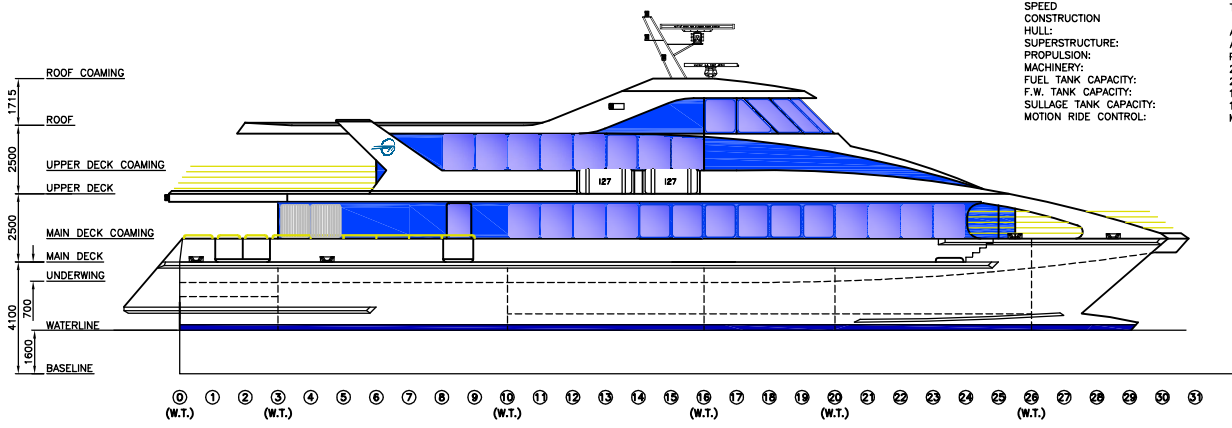
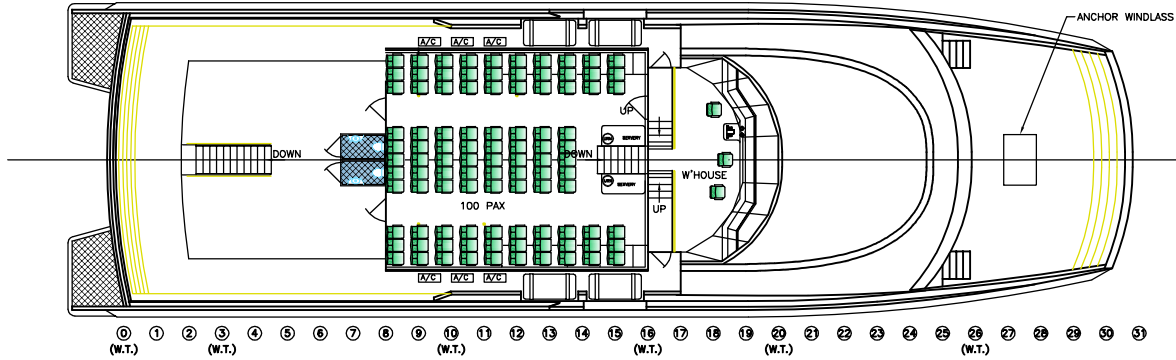


SPECIFICATIONS

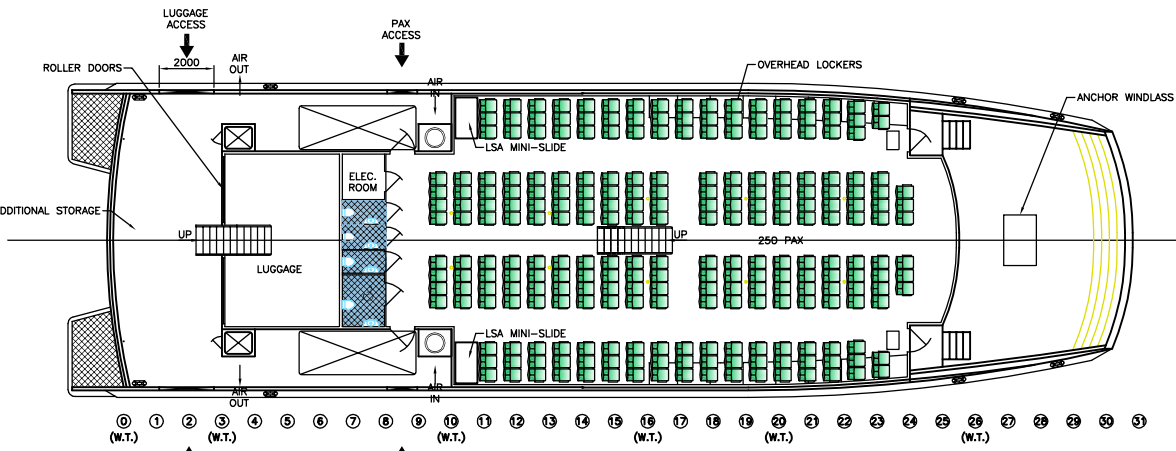
OVERALL LENGTH (INC. APPENDAGES):	39.00m
WATERLINE LENGTH:	34.86m
BEAM (NOT INCLUDING SPONSONS):	11.00m
DRAFT:	1.60m
TOTAL PASSENGERS:	350
CREW:	8
SPEED:	TBA
CONSTRUCTION:	ALUMINIUM
HULL:	ALUMINIUM
SUPERSTRUCTURE:	ALUMINIUM
PROPULSION:	PROPELLERS
MACHINERY:	2 x MTU 12V4000
FUEL TANK CAPACITY:	2 x 10000L
F.W. TANK CAPACITY:	1 x 1500L
SULLAGE TANK CAPACITY:	1 x 1000L
MOTION RIDE CONTROL:	MDI - INTERCEPTOR



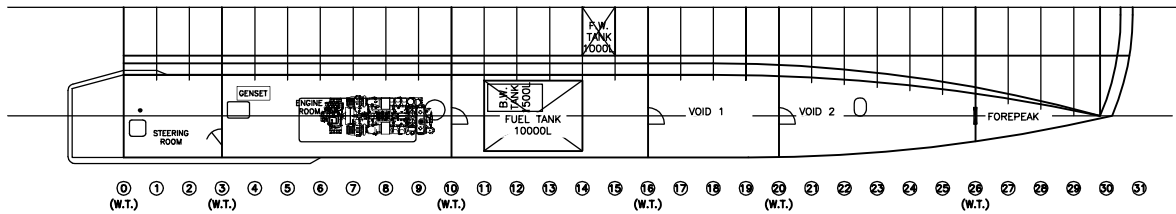
PROFILE



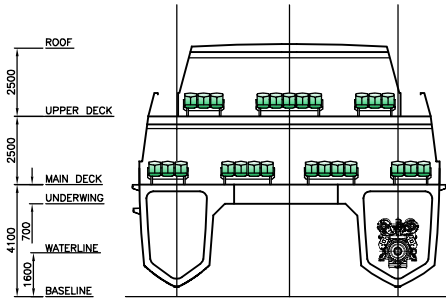
UPPER DECK



MAIN DECK



HULL PLAN



SECTION

NO.	REVISION	DRAWN	DATE	DESIGN
P1	ISSUED FOR COMMENT	S.A.M.	05.05.08	38m HIGH SPEED CATAMARAN
P2	UPPER DECK MOVED AFT	S.A.M.	21.05.08	

DESCRIPTION
GENERAL ARRANGEMENT

DIMENSIONS IN MILLIMETRES UNLESS NOTED DO NOT SCALE

PROPRIETARY INFORMATION - COPYRIGHT All Rights Reserved

In compiling this document, Incat Crowther relies upon information supplied by a number of external sources. The document is supplied on the basis that while Incat Crowther believes all the information in it will be correct at the time of publication, it does not warrant its accuracy or completeness and to the full extent allowed by law excludes liability in contract, tort or otherwise, for any loss or damage sustained by the reader, or by any other person or body corporate arising from or in connection with the supply or use of the whole or any part of the information in this document. Incat Crowther Pty Ltd ACN 104 888 781 One Incat only from this set of plans

SHEET NO. **101** DRAWN SCALE S.A.M. 1:100
DESIGN NO. **IC0823** CHECKED DATE 15.05.08

Incat Crowther

Mailing Address: PO Box 204 Newport NSW 2108 Australia

Phone: +61 2 9450 0447
Fax: +61 2 9450 0484
Email: info@incatcrowther.com
Web: www.incatcrowther.com